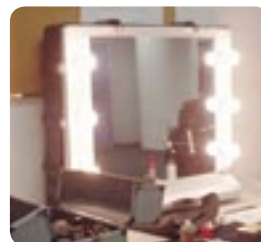
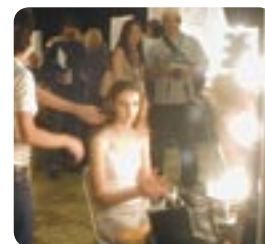




STUDIO SUPPLIES

PROFESSIONAL MAKE-UP MIRROR



The new STM Professional Make-up Mirror has evolved from 20 years of supplying the film and entertainment industry with make-up mirrors.

By Professionals for Professionals this mirror resolves all the maintenance and transport issues of traditional models and sets a new industry standard. Designed to be its own road-case the exterior is free off any protrusions that may catch or snag, and suits stacking or palletising for bulk transport. In normal use it fits neatly in the back seat or boot of a sedan.

With the cover removed by simply unhooking 4 elastic toggles the mirror can function as either a wall mounted unit with the bracket supplied, or a stand-alone workstation using its front cover as a rear support. Made from virtually indestructible wipe clean ABS plastic the unit is robust, shock proof and scratch resistant.

A generous mirror area of 620mm x 590 mm is encased in a moulded plastic surround measuring 180mm x 820mm x 750 mm in its transport mode. Weighing only 22kg it has built in carry handle which doubles as a hanging point for wall fixing. All leads and spare fuses are neatly contained within a rear compartment. With safety a priority, two earth leakage safe power points supply 240 volt power on the front face and six incandescent 40 watt globes provide ample flicker free lighting. The power outlets are secured from overload with an easily replaceable 10 amp fuse.

For more information check out our website www.stmstudiosupplies.com

Lifetime guarantee against manufacturer defect.



User friendly assembly.

STM STUDIO SUPPLIES *By professionals for professionals*

18 Dawson Street Naremburn NSW 2065

T: 02 9439 9060 F: 02 9439 9063 E: sales@stmstudiosupplies.com W: www.stmstudiosupplies.com